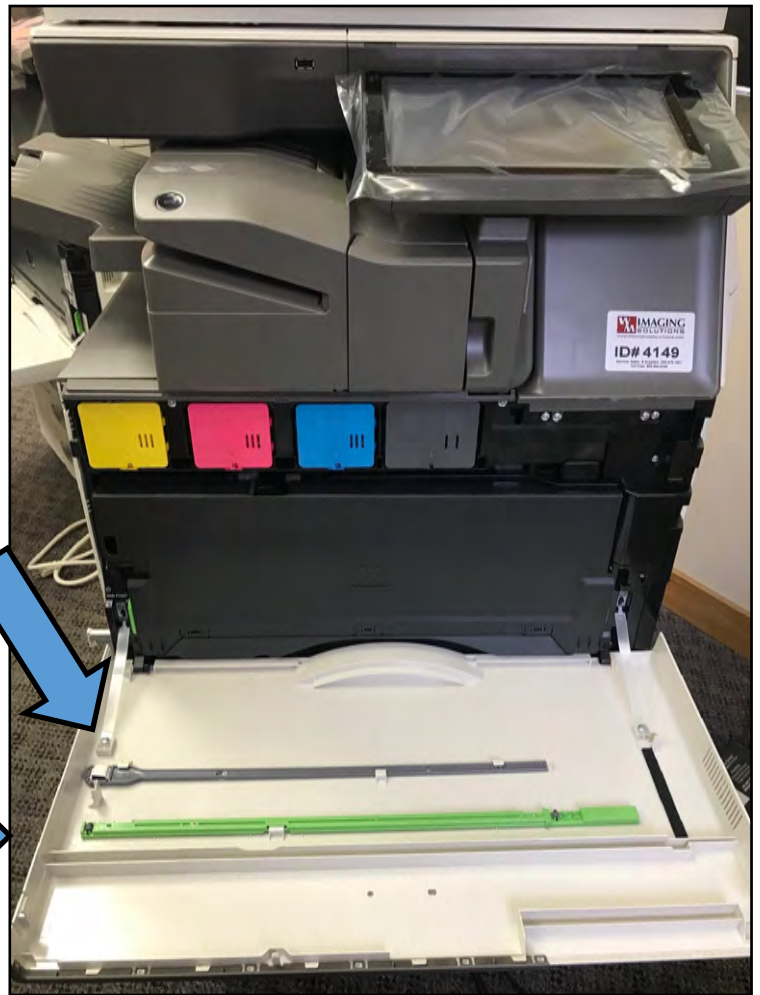


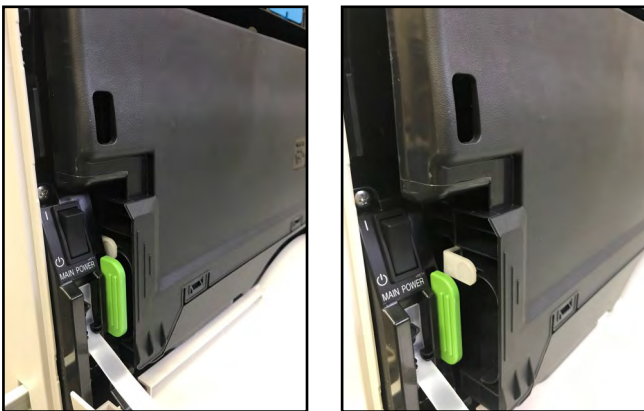
Step 1. Open the front cover of your machine.

Slit glass cleaning wand

Charge cleaner wand



Step 2: Remove waste container



Press in green tabs on both ends of the waste container to release.



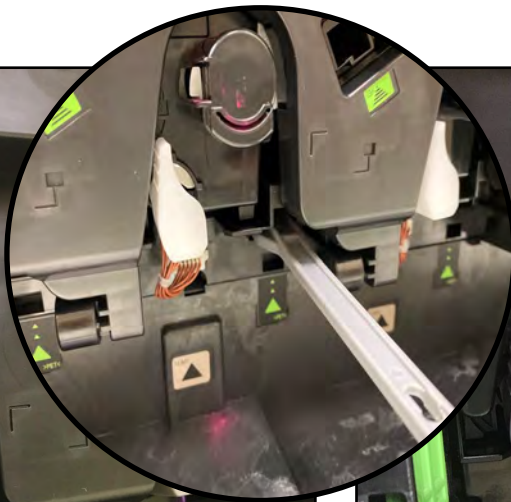
Pop out and carefully remove waste container from machine



For void areas on prints and copies follow Step 3.

- For lines on prints and copies, skip to Step 4.

Step 3: Locate black sticker with green triangles. Insert gray cleaning wand, foam pad side facing down, into the hole directly above the black sticker. Carefully push gray wand back as far as it will go (It will not go back the entire length of the wand). Run the cleaner front to back a few times. Repeat for each color- (Y, M, C, B)



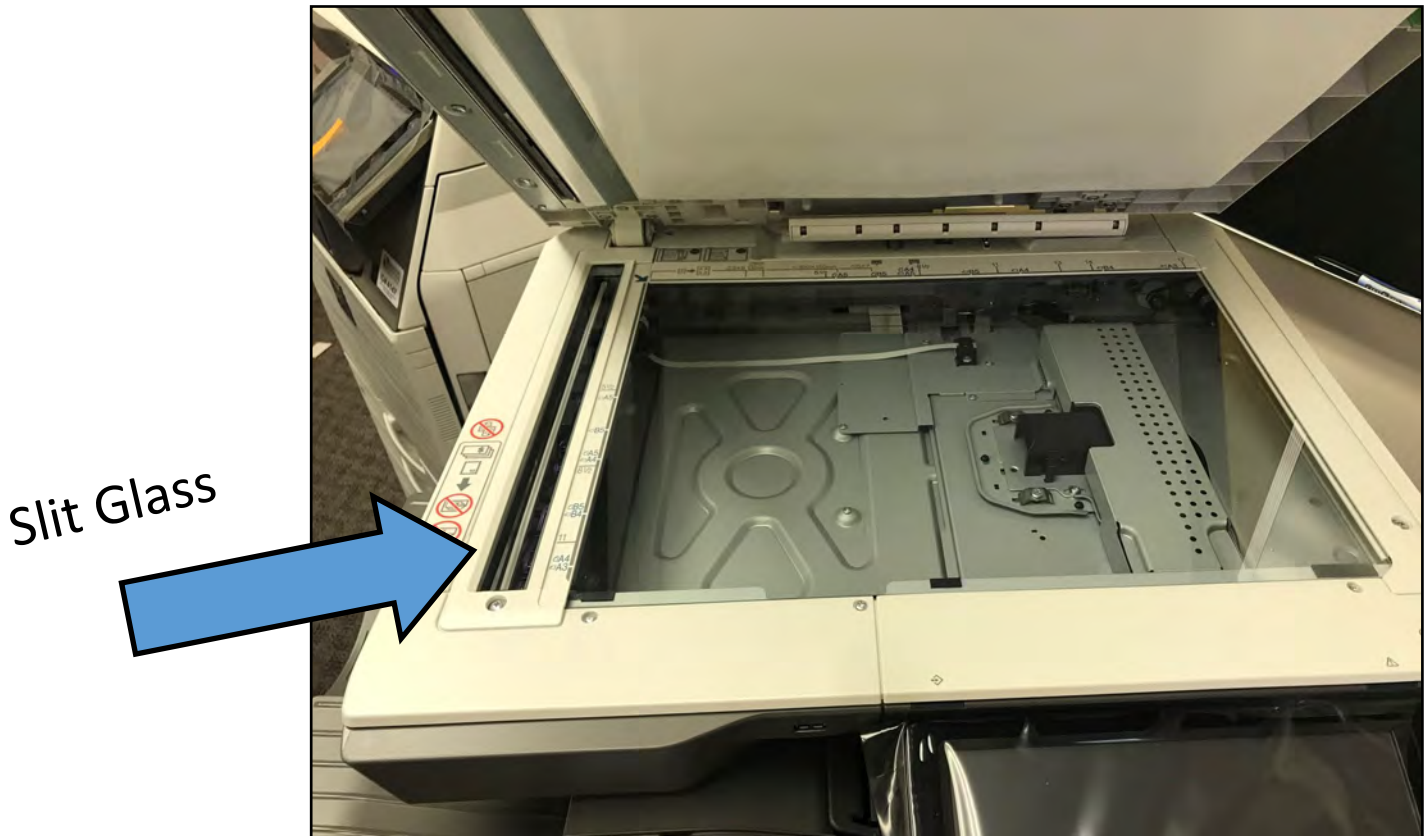


Step 4: Locate green sticker with black triangle. Insert green cleaning wand, roller side facing up, into the hole below the green sticker. (Black triangle on the end of the green wand will be facing upright). Carefully push green wand back as far as it will go (It will no go back the entire length of the wand). Run the cleaner front to back a few times. Repeat for each color- (Y, M, C, B)



For lines on scans and copies :

- Lift lid of document feeder



Using a cloth/paper towel and Windex or denatured alcohol, clean both the copy glass and the slit glass. Lines on copies and scans could be caused by small marks or even a hair on the glass.

- Note: Do not spray cleaner directly on glass. Spray cleaner on cloth/paper towel, then wipe the glass